



**Disaster Area Designs
XLoader for Disaster Area
V2.0**

October 2013

<http://www.disasterareaamps.com>

XLoader is a Windows application designed to upload new binary firmware to your Disaster Area Designs pedal. XLoader was developed by Ger Lunde, and the original version is available at <http://russemotto.com/xloader>

Requirements:

PC running Windows XP or higher

USB Cable

.HEX File to program

avrdude (included in package .ZIP file)

avrdude.conf (included in package .ZIP file)

FTDI USB Serial Driver (available at <http://www.disasterareaamps.com>)

Disaster Area USB driver (included in package .ZIP file)

Installing the USB Driver:

If you are updating a Gen1 pedal (DMC below 1000, DPC-5, DPC-4X, SMARTLoop) install the FTDI USB driver by running its installer package. Restart if prompted.

If you are updating a Gen2 pedal, force the pedal into update mode by plugging in its USB cable while holding down B1 + B2. On a DMC-6D, these are the bottom left and bottom center buttons. Windows will attempt to install the USB driver but the process will fail.

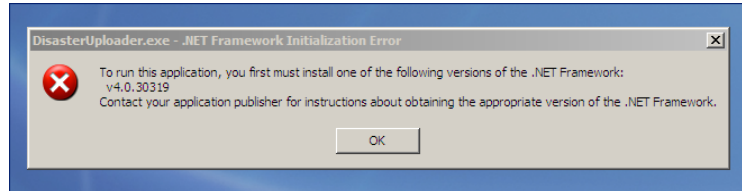
1. Click on the Start Menu, and open up the Control Panel.
2. While in the Control Panel, navigate to System and Security. Next, click on System. Once the System window is up, open the Device Manager.
3. You should see an "Unknown Device" or "COM Port" called "Disaster Updater" or similar. If no device is seen, power the pedal off and then on again while holding B1 + B2.
4. Right click on the device and choose the "Update Driver Software" option.

5. Next, choose the "Browse my computer for Driver software" option.
6. Finally, navigate to and select the driver file named "disaster.inf", located in XLoader Disaster Area folder.
7. Windows will finish up the driver installation from there.

Updating the pedal software:

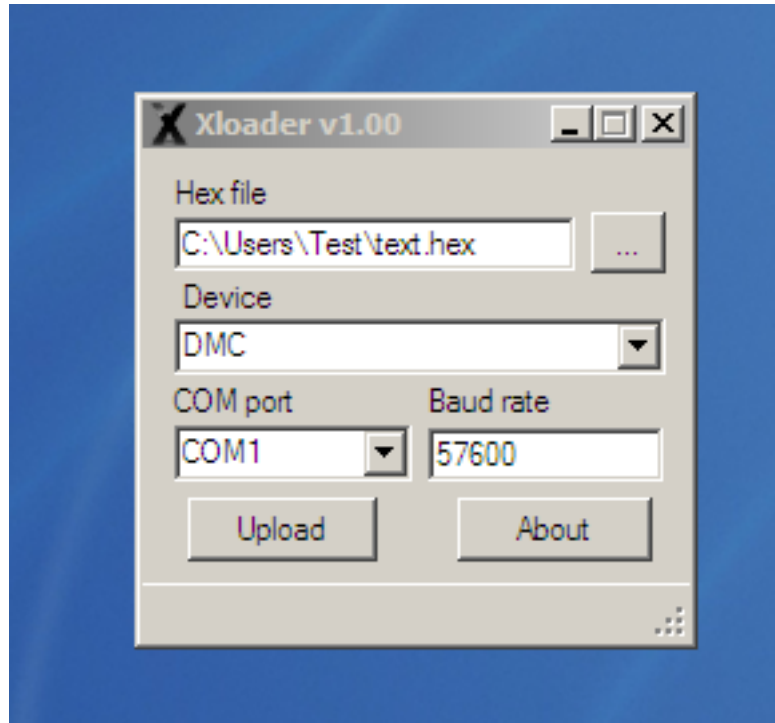
1. Unzip the .ZIP file to a folder on your PC. The desktop is recommended
2. Connect your pedal to an available USB port on your PC. A port on the computer itself is preferred but using a powered USB hub is usually acceptable.
3. Run Xloader by double-clicking on its icon.

If the .NET framework is not installed, you may receive the following error:



The latest version of the .NET framework may be downloaded at <http://www.microsoft.com/net/download>

4. When the application opens, click the "... " button to locate the .HEX firmware file to load



5. Select the Device from the list. Available options are DMC, DPC, SMARTLoop, and Disaster-G2. DMC pedals with serial numbers above 1000 are generally Gen2, as are all DMC-6D pedals.
6. Select the COM port from the drop-down box. The correct COM port is usually the highest number listed. If the wrong COM port is selected, the upload will fail but may be attempted again with a different COM port.
NOTE: If you are using a Gen2 pedal, you will need to power the pedal on while holding down B1 + B2 to force the pedal into update mode. The update mode lasts for 30 seconds, if the update does not start during this time you will need to power the pedal off and retry.
7. Press the Upload button to upload the firmware file to the DMC pedal. A console window will open and show the progress of the upload. If any error messages are encountered, please contact Disaster Area.